



Terry Road, Coventry, CV1 2AW

**Loveitts**  
PART OF | SHELDON BOSLEY KNIGHT



# Property Description

A fantastic opportunity to acquire this two bedroom property located within walking distance to the City Centre and Coventry University. The property is perfect for a first time buyer or investor due to its close proximity to the City Centre, Coventry Train Station, shops, amenities and road links. The property offers an investor a potential yield of 7.6% and is offered for sale with no onward chain.

The accommodation on offer comprises generous lounge, dining room, fitted kitchen with door leading to the rear garden, ground floor bathroom with bath and over shower and two spacious double bedrooms with one containing a built in wardrobe.

Further benefits include gas central heating, double glazing throughout and a rear garden with.



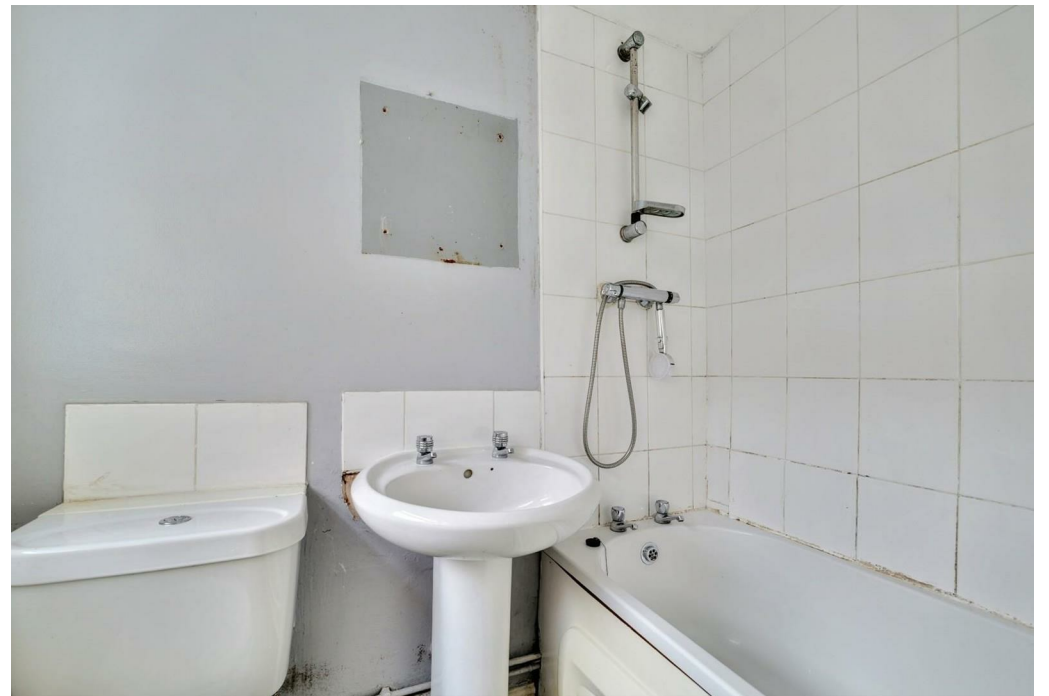


## Key Features

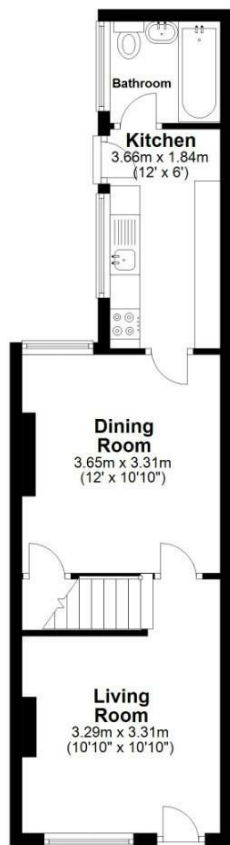
- Two Generous Double Bedrooms
- Spacious Lounge
- Separate Dinign Room
- Fitted Kitchen
- Ground Floor Bathroom
- Walking Distance to City Centre and Train Station
- Potential Yield of 7.6%
- Rear Garden
- No Onward Chain
- EPC - D

**Offers Over  
£150,000**

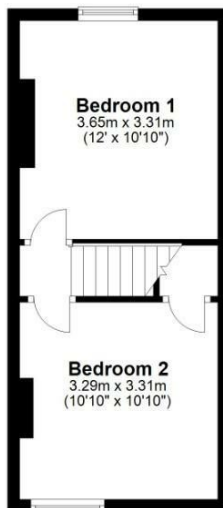




**Ground Floor**  
Approx. 36.7 sq. metres (394.8 sq. feet)



**First Floor**  
Approx. 26.4 sq. metres (284.5 sq. feet)



Total area: approx. 63.1 sq. metres (679.3 sq. feet)

All efforts have been made to ensure that the measurements on this floorplan are accurate however these are for guidance purposes only.  
Plan produced using PlanUp.



EPC Rating - D

Tenure - Freehold

Council Tax Band - A

Local Authority

We routinely refer clients to both our recommended Legal Firm and a panel of Financial Services Providers. It is your decision whether you choose to deal with these companies. In making that decision, you should know that we receive a referral fee





To view this property please contact our Loveitts Coventry (Sales) office  
on 02476 258421